

# Mobile Poultry Processing Units in California, Montana, and Vermont: How's it Going?



**NICHE MEAT PROCESSOR**  
ASSISTANCE NETWORK

*October 14, 2009 Webinar*



*[www.nichemeatprocessing.org](http://www.nichemeatprocessing.org)*



# MOBILE POULTRY PROCESSOR IN THE SIERRA NEVADA

Roger Ingram

County Director / Farm Advisor

Placer / Nevada Counties

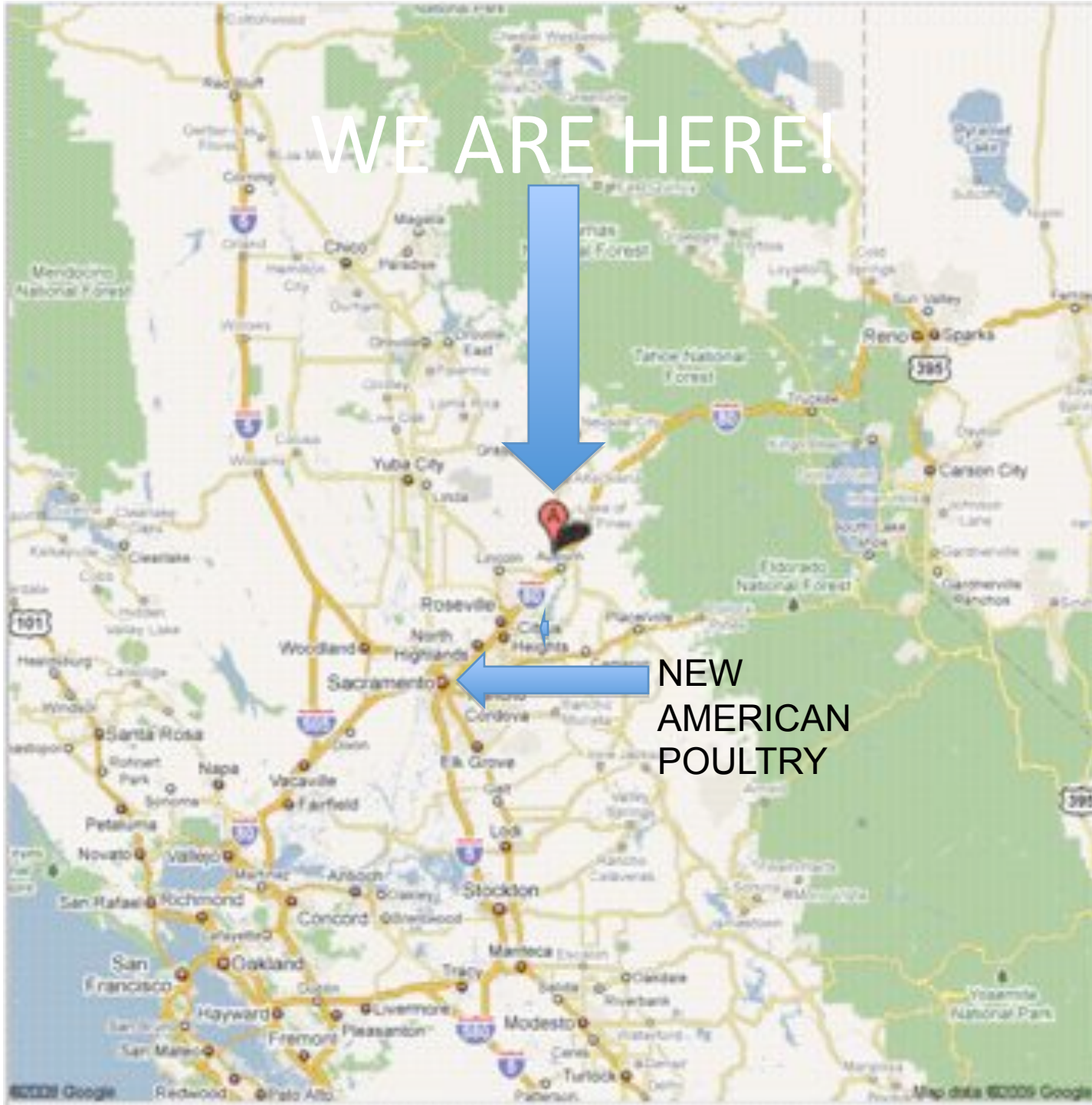
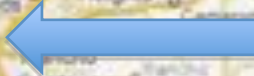
# Need

- Increased interest in raising pastured poultry
- Increasing interest in locally raised meat
- Closest poultry processor was in Sacramento, about a 60-90 mile round trip depending on location.

WE ARE HERE!



NEW  
AMERICAN  
POULTRY



# GETTING STARTED

- Grant received by Sierra Community College
- Producer Steering Committee formed
- Stuff ordered
- Sold Trailer Sponsorships

# NEXT STEPS

- Received processing equipment  
February 2008
- Received trailer May 2008
- Floor, electrical, and plumbing  
finished June 2009

# 2008 PlacerGROWN FARM CONFERENCE



TRAILER – JULY 2008





# COMPLICATIONS

- CDFA Meat and Poultry Inspection says:
  - You raise and process it, you can sell up to 20,000 whole birds direct off the farm and at farmers' markets
- California Association of Environment Health Administrators (CCDEH) says not so fast
  - You can only sell poultry at a farmers' market from an approved source
  - CDFA has jurisdiction over Food and Ag Code. CCDEH has jurisdiction over Retail Food Code.

# APPROVED SOURCE

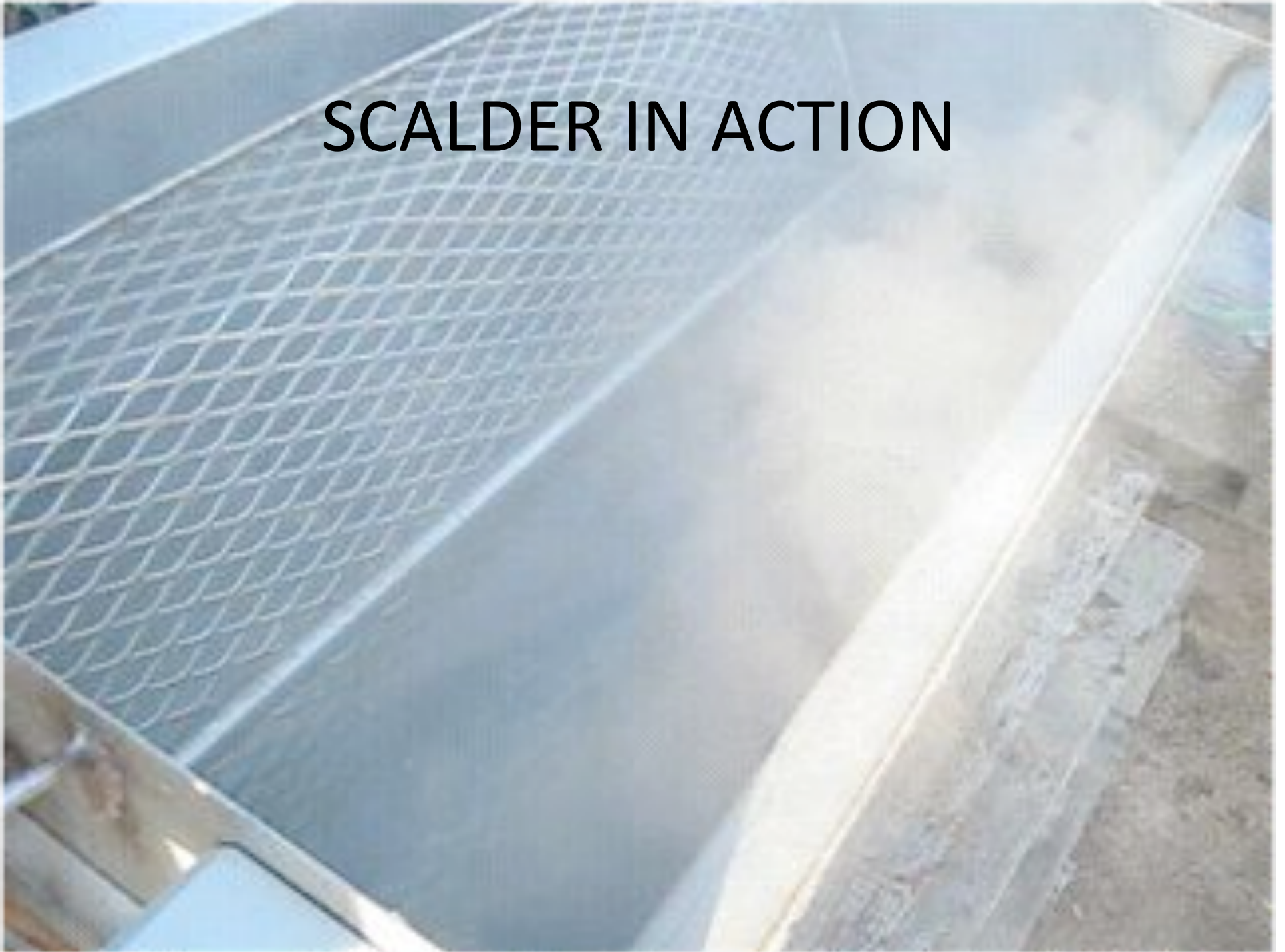
- No one can really say who approves the source
- Wastewater capture and disposal
- Chicken guts technically need to be rendered
- Meat storage

# WHO'S IN CHARGE?

- No formal entity is in charge of the trailer
- Steering committees are great for getting started and providing input.
- They don't work for trailer management



**SCALDER IN ACTION**



# PLUCKER IN ACTION



# PLUCKER AFTERMATH





THE INSIDE – TRIPLE  
WASH SINK

WE DID DUCKS AS WELL



# WHAT HAPPENS NEXT?

- Develop detailed operations manual and quick start guide
- Identify entity that will manage the trailer
- Get signage on trailer for sponsorships
- Develop and implement training program by Spring 2010
- Promote trailer