

## 2012 Annual Imported Fire Ant Conference

April 16 – 19, 2012

Nashville, Tennessee

The 2012 Local Arrangements Committee would like to extend an invitation for you to attend the 2012 Imported Fire Ant Conference.

The conference will be held April 16-19, 2012 at the [Holiday Inn Express Nashville Downtown](#), 920 Broadway, Nashville, TN 37203. Meeting arrival is April 16<sup>th</sup> with an evening reception from 6 to 8 pm. Conference presentations will be given on April 17-18 with April 19 reserved as a workday for the eXtension Imported Fire Ant Community of Practice.

The Imported Fire Ant Conference provides a great opportunity for research scientists, students, Extension specialists, and industry representatives to interact and exchange ideas and research findings.

For the 2012 Conference, we have organized a special morning session on other invasive ant threats, which will include guest presentations by [Dr. Pat Zungoli](#) (Clemson University), [Dr. Karen Vail](#) (University of Tennessee), and [Dr. David Oi](#) (USDA-ARS Center for Medical, Agricultural and Veterinary Entomology). The morning session will be followed by contributed presentations and posters on imported fire ant and other invasive ants.

We expect this to be a very informative, exciting, and interesting meeting on imported fire ants and other invasive ant issues.

### Meeting Registration and Presentation Submission:

To register for the Conference, please go to: [Registration](#)  
(Deadline for registration is March 10, 2012)

To submit an oral or poster presentation, please go to: [Presentation Submission](#)  
(Deadline for presentation submission is February 29, 2012)

### Hotel Reservations

To make your room reservations, please call the Holiday Inn Express Nashville Downtown at 615-244-0150. The **cut-off date** for reserving your room to receive the group rate of \$107 per night per room (plus 15.25% sales tax and \$2.50 city tax) is **March 25, 2012**. Please provide the group name, **Imported Fire Ant Group** block when making your reservations. Hotel check in time is 3 p.m. CST and check out time is 11 a.m. CST.

### Hotel Parking

Parking is \$10 per day for meeting attendees. Indicate you are with the *Imported Fire Ant Group* at the hotel registration desk to receive the discounted parking tag.

### Other Hotel Amenities

Wireless internet is complimentary throughout the hotel including all meeting rooms. A complimentary continental breakfast is served weekdays from 6:30 - 9:30 a.m.CST. The hotel also has a free 24-hour fitness center. More information about the hotel can be found at their [Holiday Inn Express Nashville Downtown](#) website.

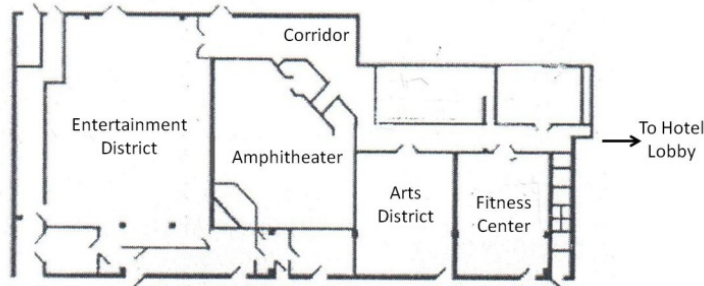
## Ground Transportation

The Holiday Inn Express is located 8 miles from the Nashville International Airport. Gray Line Airport Express (615-883-5555) provides service to the Holiday Inn Express every 30 minutes. If you choose Gray Line, indicate you are with the *Imported Fire Ant Group* to receive a \$20 roundtrip / \$16 one-way discounted group rate. More information on shuttle services can be found at [Airport Shuttle](#).

## Meeting Rooms

Activity	Room Location
Registration and meeting information	Area labeled corridor
Primary meeting room and oral presentations	Amphitheater
Luncheons and poster viewing	Entertainment District
eXtension Imported Fire Ant COP meeting	Entertainment District

## Floor Plan



## Nashville Activities and Attractions

The Conference site is a convenient walking distance (6-8 blocks) from downtown Nashville, where there are many dining and entertainment venues. We have provided PDF maps on the [website](#) to Downtown Nashville restaurants, Downtown-Vanderbilt restaurants and Downtown Nashville entertainment venues. The [Nashville Convention and Visitors Bureau](#) website has comprehensive information on things to do in Nashville, the city's history, coming attractions, current events and dining. The hotel also provides free shuttle service to and from the downtown Nashville area.

Nashville is well known for country music, which has earned it the nickname of "Music City." As such, there are numerous shops, museums, restaurants, and honky-tonks that center on the country music theme. Nashville is also home to the [Country Music Hall of Fame and Museum](#), the [Parthenon](#), the [Nashville Zoo](#) at Grassmere, the [Frist Center for Visual Arts](#) (across the street from the hotel), [The Hermitage](#), the [Grand Ole Opry](#), the [Ryman Auditorium](#), and a host of other museums and attractions. Nashville has something for everyone.

The Local Arrangements Committee is looking forward to seeing you in Nashville for the 2012 Imported Fire Ant Conference.

If you have any questions concerning the Conference, please contact:

[Jason Oliver](#), PhD (Local Arrangements Chair)  
Research Associate Professor of Entomology  
Tennessee State University, College of Agriculture, Human, and Natural Sciences  
Otis L. Floyd Nursery Research Center  
472 Cadillac Lane  
McMinnville, TN 37110  
931-668-3572 (office); 931-808-8210 (mobile); 931-668-3134 (fax)