

Common Problem Areas



Trevor Urban
EPA Region 7
Kansas City, KS

Common Violations –

- What inspectors want to see...
 - All process waste waters controlled and managed per the permit (if applicable)
 - Maintain the facility to prevent discharges
- What they sometimes find...
 - Discharges from feed stock storage & composting areas
 - Poor housekeeping around the facility
 - Poor recordkeeping and lagoon maintenance

Typical Areas of Focus

- Lagoon maintenance
- Storage capacity, management
 - Lagoon, manure and litter piles
- Feed stock, silage and bedding storage
- Solids build up in the lagoon or storage containment structures
- Run off from open production areas
- Diversion of clean water

Typical Areas of Focus

- Equipment maintenance e.g., to avoid breaks in water or effluent pumping lines
- Proper manure application to fields
- Mortality management
- Nutrient Management Plan (NMP) or Comprehensive Nutrient Management Plan (CNMP)
- Records
- Process waste water runoff to stream

Adequate Storage Capacity





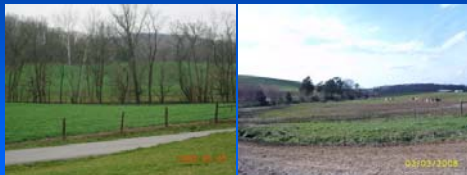








Prevention of direct contact of animals with "Waters of US"



Direct Contact



Production Area Runoff

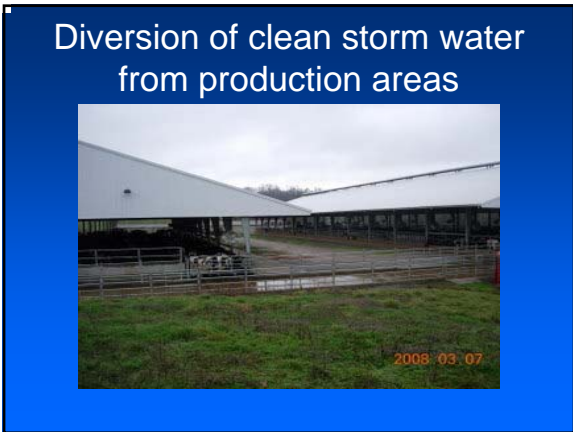


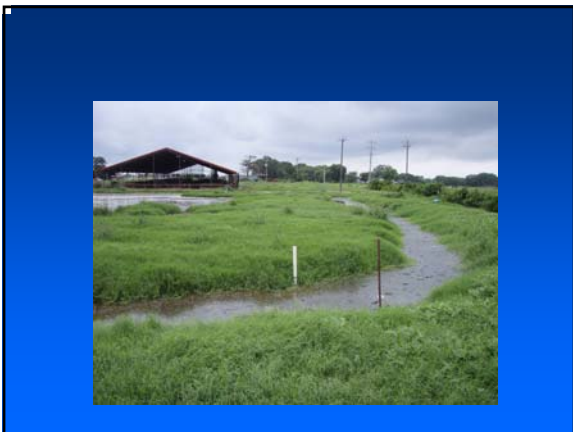




Archived presentation available at:
http://www.extension.org/pages/Animal_Feeding_Operation_Inspection_Webcast



















Proper Management of Mortalities



Composting mortalities















Open Piles

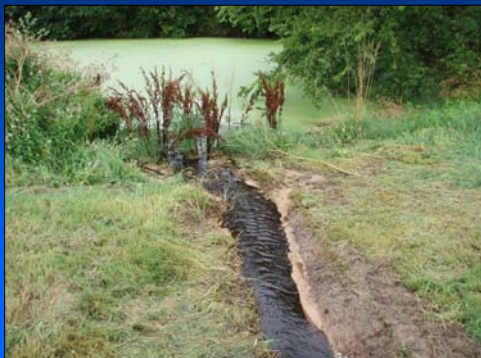


Process Waste Water (Leachate) from Silage Storage





Leachate reaches the stream



Archived presentation available at:
http://www.extension.org/pages/Animal_Feeding_Operation_Inspection_Webcast